

Get to know the real Susukino, the largest entertainment center in northern Japan. From the famous spots to the ones the locals frequent!!



Sapporo city assistance project

## List of stores

### FOOD

- 1 Stylish Hokkaido Sake Bar, Aiyō Susukino Shop
- 2 Meat and Sake ACT
- 3 WARAYAKI Sakaba AKUTO
- 4 Tsuke-Shabu DINING SATO
- 5 Kitano Kaisenburi Noa-no-Hakobune
- 6 American Steak & Gourmet Bar 宝 HOU
- 7 OUTDOOR DINING Meer Lounge NORBESA SOTITE
- 8 HOKKAIDO BUFFET DINING Kai
- 9 JAPANESE BUFFET DINING Den
- 10 Yakitori Sakeba Donku
- 11 Oyster bar AZUMASI
- 12 Latin Izakaya BOOGALOO
- 13 Spanish restaurant Chavda

### BAR

- 14 Ardagh
- 15 GOSSIP LOUNGE
- 16 Es CRAFT
- 17 BAR SLY
- 18 BAR Zanshin
- 19 THE CRAFT
- 20 THE NIKKA BAR
- 21 THE.LOTS
- 22 RAD BROTHERS
- 23 Brian Brew S3branch
- 24 Nakame Ping Pong Lounge Sapporo Branch
- 25 Saloon de Scarf
- 26 St.John's Wood
- 27 BAR espana
- 28 FLAIR BAR es

### AMUSEMENT

- 29 Dinos Bowl, NORBESA Store
- 30 Round One, Sapporo Susukino Branch
- 31 KING STAR
- 32 THE GOLF BAR Nice Shot

### ENTERTAINMENT

- 33 NORBESA
- 34 マジックバー TRICK
- 35 PUBLIC THEATER PHOENIX
- 36 LaLaToo

### NIGHT WALK

- 37 MEGA Don Quijote Sapporo Tanukikoji Main Store and North Branch
- 38 KING∞XMHU
- 39 Riviera

- 40 Picanha Minami Nanajo Shop
- 41 CHUTTA! Susukino Shop
- 42 Yamaakaya New Susukino Shop
- 43 Ramen Sora
- 44 Menya Gencho
- 45 Sushi Zanmai Susukino Shop
- 46 Pearl Specialty Shop
- 47 Recipe for Happiness Sweets
- 48 PLUS
- 49 Dip & Merry

CARD Accepts credit cards

Smartphone payment

EN Speaks English or has an English menu

CN Has a simplified Chinese menu

TW Has a traditional Chinese menu

KO Has a Korean menu

RU Has a Russian menu

Wi-Fi

Wi-Fi available

Welcome SAPPORO

WEB page

production

Sapporo Night Map Production Committee

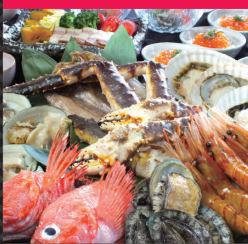


1 Stylish Hokkaido Sake Bar, Aiyō Susukino Shop

CARD WeChat / PayPal / Alipay

Choose from all sorts of Hokkaido specialties on the menu! Especially, "Hokkaido Namamori" can offer you local vegetables, meat and fresh seafood all on one plate with 2,580 yen. The special all-you-can-drink plan starts at just 1,580 yen. Enjoy dishes created with an abundance of Hokkaido-area ingredients!

LC Ichibankan Bldg. 1F, 4-chome  
Minami Rokujo-Nishi ☎ 011-271-2425  
18:00-5:00



5 Kitano Kaisenburi Noa-no-Hakobune

CARD PayPal EN

Enjoy fresh seafood and vegetables, carefully selected meat cultivated from the northern mountains and ocean. Each table has a charcoal grill. Staff is on hand to cook your meal at your table, serving it at the perfect time for the ultimate taste. Please enjoy these delicious seasonal treats.

4-chome, Minami Hachijo-Nishi  
☎ 011-521-3022  
17:00-23:00



9 JAPANESE BUFFET DINING Den

CARD EN TW KO

All-you-can-eat creative cuisine including king crab, snow crab and fresh seafood can be enjoyed at this popular restaurant. You can also order all-you-can-eat Yakinku or Shabu-Shabu! There's a corner where the chefs prepare the food right in front of you, and impressive images that make the space memorable.

Ashiru Sapporo Bldg. 3F, 5-chome  
Minami Gojo-Nishi ☎ 011-552-9000  
①17:00- ②19:00- Two seatings



13 Spanish restaurant Chavda

CARD EN

Modeled after a back-alley Spanish bistro, The whole restaurant feels like it is set on a terrace, giving the space a dynamic feel. A maximum of 100 people can dine here. Start with tapas, then try the paella, the ahijo, pizzas cooked in a custom-built stone oven and 120 different kinds of food and enjoy yourself.

Ashiru Sapporo Bldg. 1F, 5-13-1  
Minami Gojo-Nishi ☎ 011-521-0302  
Mon-Thu 18:00-3:00  
Sun & Holiday 18:00-1:00  
Fri & Sat & before Holiday 18:00-5:00



17 BAR SLY

CARD

Play darts, sing karaoke until 7 in the morning at this bar.

LC Rokubankan 7F, 5-chome  
Minami Gojo-Nishi ☎ 011-211-5777  
21:00-7:00

No charge for darts and karaoke



21 THE.LOTS

CARD PayPal EN

A 1-minute walk from the Hosui Susukino Station, this restaurant features cocktails with fresh fruits and cleverly created dishes. Dine and drink in this unpretentious, casual setting, trying delicious soda cocktails and small plates of food. Have a cocktails with fresh fruits and two or three small plates of food and enjoy yourself.

Shokokai Bldg. 2F, 2-chome, Minami Gojo-Nishi  
☎ 011-213-0201 Mon-Thu 20:00-1:00  
Fri & Sat & before Holiday 20:00-3:00

¥500 off from the total amount



25 Saloon de Scarf

CARD EN

The avant-garde and conservative bar this is. Where no one can find. May the force be with you ♡

Dai-1 Kanko Kaikan Bldg. 3F, 4-1  
Minami Gojo-Nishi ☎ 011-215-1823  
20:00-4:00



29 Dinos Bowl, NORBESA Store

CARD PayPal e-money EN CN TW KO

This is an entertaining bowling alley. It's a little bit different from your average bowling alley. The top recommendation is the "All-You-Can-Bowl-and-Drink Plan." Have a drink and have fun bowling. On the weekends, there's a DJ, music and lights, and a cast to deliver your drinks!

NORBESA 6F, 5-1-1, Minami Sanjo-Nishi  
☎ 011-290-6301 / 10:00-5:00

For every paid game of bowling, you'll receive one free drink.



33 NORBESA

CARD EN CN TW KO

Hokkaido's rooftop Ferris wheel landmark. Take in all 360 degrees of Sapporo city while riding this Ferris wheel. It operates until 3 a.m., on Fridays, Saturdays and days before holidays. Enjoy the moving night view. There are also a lot of places open 24 hours for karaoke, bowling, darts, drinking and eating.

5-1-1, Minami Sanjo-Nishi  
Sun-Thu and holidays 11:00-23:00  
Fri-Sat and days before holidays 11:00-3:00



2 Meat and Sake ACT

CARD PayPal EN

Try beef sushi and sashimi at a reasonable price. The warm, bright interior has undertones of wood that relax you during your visit.

Momoya Bldg. 3F, 5-chome  
Minami Gojo-Nishi ☎ 011-511-2925  
18:00-2:00

300 yen off the all-you-can-drink plan



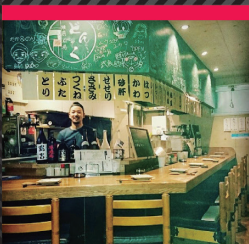
6 American Steak & Gourmet Bar 宝 HOU

CARD PayPal EN CN TW KO

Step inside this large and spacious restaurant done in the image of an American diner and you'll feel like you're in a scene in a movie. Hou is the right choice for banquets, after-parties and other rental arrangements.

Dai-7 Keiwa Bldg. B1F, 5-chome  
Minami Gojo-Nishi ☎ 011-513-6330  
18:00-5:00

Steak is half off on dates with a 2 or a 9 in them!



10 Yakitori Sakeba Donku

CARD PayPal EN

Dine on authentic charcoal-grilled yakitori in an at-home atmosphere.

Kamiya Bldg. 5F, 4-4-9, Minami Sanjo-Nishi  
☎ 011-212-1989  
17:30-2:00



14 Ardagh

CARD PayPal EN

This casual bar attracts a wide age range, from people in their 20s to their 40s. This approachable bar is welcoming to first-timers. R&B and black music play in the background. There's an all-you-can-drink plan (3 hours, 3,000 yen), karaoke, and it is open until 6am all year round!

New Keiwa Bldg. 4F, 6, Minami 5 Nishi  
☎ 011-521-9898  
21:00-6:00



18 BAR Zanshin

CARD EN

A center lodge for admiring the snowy mountains! Try some sake and curry. Listen to some nice music and watch the videos. Why not? Welcome to ZANSHINN!! Let's get fucked up with Snow movies & Good music!!

Noguchi Bldg. 5F, 4-chome  
Minami Rokujo-Nishi ☎ 011-206-9156  
Mon-Thu 21:00-3:30 Fri-Sat 21:00-5:30



22 RAD BROTHERS

CARD EN

Rad Brothers, on a corner in Susukino, celebrates its 25th anniversary this year. So many people of different backgrounds come here it feels like a foreign country. If you want to party in a city that doesn't sleep, come to the King of Bars, Rad Brothers!! Let's get fucked UP!!

LC Nibankan Bldg. 1F, 3, Minami Nanajo-Nishi  
☎ 011-561-3601 18:00-6:00

Free shot of tequila



26 St. John's Wood

CARD PayPal EN

This Irish pub offers no-charge shots on the 1st floor right near the Susukino crossing. It offers an abundance of draft beers and cocktails and seasonal menus. The clientele features a nice mix of locals, business travelers, and tourists.

Keiai Bldg. 1F, 4-chome, Minami Yonjo-Nishi ☎ 011-271-0085  
Mon-Thu 17:00-2:00 Fri-Sun 17:00-5:00



30 Round One, Sapporo Susukino Branch

CARD EN 24 hours a day

This multi-entertainment complex offers bowling, karaoke, billiards, darts, table tennis, and new video game machines. It's a great choice for a second party after having drinks with friends. Since it's open 24 hours a day, there's no need to worry about closing times, and the facilities can be enjoyed at any time of day. \*The game floor is open from 6:00 to 23:50.

3-6-1, Minami Gojo-Nishi ☎ 011-520-1022

Elementary and junior-high school students can now get in free for the bowling, karaoke, and medal games. For every adult aged 18 or over (not including students) one junior-high school or younger can enter for free.



34 Magic Bar TRICK

CARD PayPal / Alipay EN

Hokkaido's biggest magic bar. Enjoy professional magic acts right before your eyes. The magic on the stage will excite and impress you. Powerful light shows are also being held. This space can handle wedding after parties, date nights and any group of up to 50 people. We can also organize surprise birthday and anniversary parties!

Cyber City Bldg. 8F, 2-chome, Minami Gojo-Nishi  
☎ 011-522-8181 20:00-6:00

Number of people in your party x 500 yen off



3 WARAYAKI Sakaba Akuto

CARD WeChat / PayPal EN CN TW KO

This lively, exciting restaurant was created around the concept of combining the traditional straw grill cooking method invented in Tosa with fresh Hokkaido ingredients. Enjoy the fragrant aroma of straw and carefully selected food ingredients.

Ai Bldg., 5-7, Minami Yonjo-Nishi  
☎ 011-261-7880  
17:00-1:00

One free serving of seared bonito slice grilled with straw and served with salt.



7 OUTDOOR DINING Meer Lounge NORBESA

CARD EN

This restaurant is on 1st floor of NORBESA, a Sapporo Susukino landmark with a Ferris wheel on the roof. A favorite here is the grilled Hokkaido beef and vegetables with dipping sauce. All-you-can-drink for 2 hours plans are available with ¥1,500 (without tax). No smoking.

NORBESA 1F, 5-1-1, Minami Sanjo-Nishi  
☎ 011-218-5700 11:00-23:00

Order a course for 3,000 yen or more and get a free Ferris wheel ticket.



11 Oyster bar AZUMASI

CARD PayPal / Alipay EN CN TW

This is a restaurant that specializes in oysters. In Hokkaido, we can get fresh oysters daily from Akkeshi. Don't miss out on these delicious oysters, available all year round. You can also just enjoy a drink here if you like.

4-4-1, Minami Rokujo-Nishi  
☎ 011-513-7800  
18:00-3:00



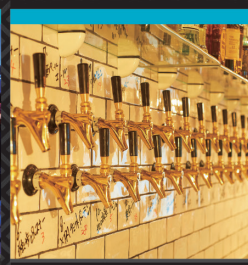
15 GOSSIP LOUNGE

CARD EN

Pay the entrance fee to this reasonably priced bar, and then drinks and food will be sold at cost or at the market rate.

GDINING 7F, 3-chome  
Minami Sanjo-Nishi ☎ 011-206-1331  
20:00-6:00

No service charge



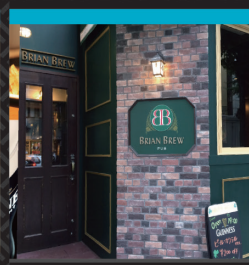
19 THE CRAFT

CARD EN

Hokkaido's biggest fresh-from-the-barrel beer bar with 33 taps. Local Hokkaido beers and other regional beers from Japan are served. There are all sorts of food choices, from Chicago-style pizza to charcoal grilled steaks.

Matsuoka Bldg. 1F, 4-chome  
Minami Yonjo-Nishi ☎ 011-241-5555  
Mon-Thu 17:00-2:00  
Sun & Holiday 17:00-1:00  
Fri & Sat & before Holiday 17:00-3:00

No service charge



23 Brian Brew S3branch

CARD PayPal / LINE Pay EN

Hokkaido's original Irish pub. Guinness on tap, Kilkeny and Sapporo Classic from the barrel, single malts and all sorts of other good drinks to choose on the menu. The pub uses Hokkaido ingredients to make its signature fish and chips, shepherd's pie, and other classic dishes. You can also catch the latest rugby and other sporting events on TV here.

FA-S 3 Bldg. 1F, 3-chome  
Minami Sanjo-Nishi ☎ 011-219-3556  
17:00-1:00

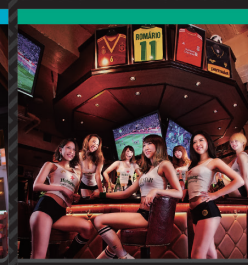


27 BAR espana

CARD EN

Sapporo original Spanish bar! The paella is delicious here. It won the international paella championship in Japan two years in a row in 2014 and 2015. There is also a special course in honor of the restaurant's 13th anniversary. Experience a little bit of Spain in Sapporo.

New Olympia Bldg. 1F, 3-chome, Minami Rokujo-Nishi ☎ 011-532-0001  
Mon-Sat 18:00-3:00 Sun & Holiday 18:00-1:00

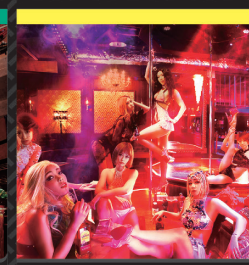


31 KING STAR

CARD EN

King Star, Hokkaido's biggest sports and girls bar. A new kind of sports bar where you can enjoy friendly competition with the lively, fun King's girls. The interior is so meticulously designed it's like a sports museum. If you're going out for some sports in Susukino, do it with a King's girl at King Star!

Gojo Building, 3-chome, Minami Gojo-Nishi  
☎ 011-596-0595  
18:00-4:00



35 PUBLIC THEATER PHOENIX

CARD

A sexy cast of pole dancers and bondage-clad babes greet you at this never-before seen girls bar. Inside, you'll find a unique setting with sound and lighting that takes you far away from your typical day. Very flashy red and yellow neon sign can help find our shop.

Okura Bldg., 2-chome, Minami Gojo-Nishi  
☎ 011-596-9966  
19:00-4:00 Closed on Sundays



4 Tsuke-Shabu DINING SATO

CARD

A healthier and more delicious version of Shabu-Shabu. This is the only place you can enjoy the latest trend in Shabu-Shabu cuisine, Tsuke-Shabu. The richness of top-quality beef and a healthy portion of vegetables. A projector and white board are also available. Try the local wagyu beef in Suke-Shabu dish. Open until 4am nightly.

LC Sanbankan, 5-chome, Minami Gojo-Nishi  
☎ 011-215-0029  
18:00-4:00 Sun and holidays 18:00-23:00



8 HOKKAIDO BUFFET DINING Kai

CARD EN TW KO

King crab, snow crab, fresh seafood, Shabu-Shabu - all-you-can-eat creative cuisine at this popular restaurant. Located right in the middle of Tanukikoji and Susukino, it's a great place to have fun after your meal. Price: Adult, ¥4,500 (without tax) for 70 minutes.

NORBESA 1F, 5-1-1, Minami Sanjo-Nishi  
☎ 011-280-0000  
①17:00- ②19:00- Two seatings



12 Latin Izakaya BOOGALOO

CARD PayPal EN

Convivial Latin music fills this restaurant. There are plenty of amusements, from darts to pinball and a jukebox. Pair a memorable mojito with some tacos. The restaurant seats 50 comfortably. Drinks start at ¥500, food at ¥300. The 2-hour all-you-can-drink plan is just 2,000 yen.

HBN Bldg. 2F, 6-18, Minami Gojo-Nishi  
☎ 011-206-9556 Sun-Tue 20:00-05:00  
Fri & Sat 18:00-05:00

10% discount



16 es CRAFT

CARD EN

Es, a beer and meat restaurant, features 100 types of craft beer and thickly sliced steak. The key is that thick steak and beer go together so well. The master is a certified beer taster and beer judge who chooses the more than 100 types of craft beer with confidence.

N-PLACE Bldg. 1F, 3-1-2  
Minami Yonjo-Nishi ☎ 011-521-3226  
18:00-3:00



20 THE NIKKA BAR

CARD EN

A bar made to enjoy the legacy of the father of Japanese whiskey. "Masataka Taketsuru", founder of Nikka Whiskey.

Dai-3 Green Bldg. 2F, 3  
Minami Yonjo-Nishi ☎ 011-518-3344  
18:00-3:00 Sun & Holiday 18:00-1:00





**37 MEGA Don Quijote**  
Sapporo Tanukikoji Main Store and North Branch  
CARD WeChat / CUP / AllPay Wi-Fi

**38 KING∞XMHU**  
CARD Wi-Fi EN

**39 Riviera**  
CARD EN

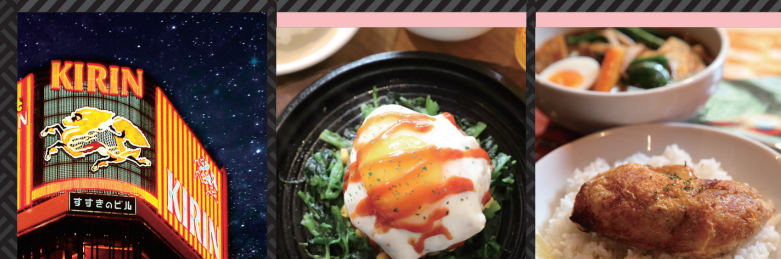
At the main store, you'll find fresh food never before stocked in the store. There is an abundant array of food products on display! The north branch store across the street features the largest selection of imported brands from Hokkaido. Come and check out the new Don Quijote!

4-12-1, Minami Sanjo-Nishi (main store)  
4-2-11, Minami Nijo-Nishi (north branch)  
☎ 011-207-8011  
open 24 hours

424-10, 4-chome  
Minami Nanajo-Nishi ☎ 011-252-9912  
Sun-Wed 21:00-4:00  
Fri & Sat & before Holiday 21:00-5:00  
Closed on Thursdays

The Riviera is a nightclub in the Sapporo Susukino area.  
We promise that you'll see top domestic and international DJs playing wild music to get you partying.  
Have a drink and strike up a conversation. Or just get into the music. Come party at Riviera.

Susukino Noguchi Bldg. B1F, 4-2-4  
Minami Rokujo-Nishi ☎ 011-206-0226  
20:00-6:00



**40 Picanha** Minami Nanajo Shop  
CARD

**41 CHUTTA!** Susukino Shop  
EN CN TW Wi-Fi

Picanha never closes and always offers delicious meat dishes. Of course, there are drinks too. It's a store that can be used in many different ways.

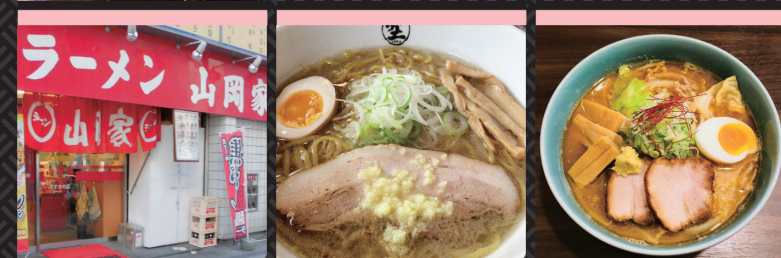
This Susukino establishment serves soup and curry until 5 in the morning. The spices used here are imported directly from Sri Lanka and served in an original blend. Make sure to try it at least once. You just might get hooked. Last order is in about 30 minutes.

5-1-1, Minami Nanajo-Nishi  
☎ 011-206-0650  
open 24 hours

3-10, Minami Rokujo-Nishi  
☎ 011-551-2222  
19:30-5:00 Holiday 19:30-2:30  
Closed on Sundays and Mondays

5-1-1, Minami Nanajo-Nishi  
☎ 011-206-0650  
open 24 hours

3-10, Minami Rokujo-Nishi  
☎ 011-551-2222  
19:30-5:00 Holiday 19:30-2:30  
Closed on Sundays and Mondays



**42 Yamaokaya** New Susukino Shop  
Wi-Fi EN CN

**43 Ramen Sora**

**44 Menya Gencho**  
Wi-Fi CN TW KO

Large pork bones are simmered for three days and the soup is served to the customers on the fourth. There's no central kitchen; the store makes its own chashu (sliced grilled pork) and soup from scratch. We take the time and expense to make a delicious bowl of ramen.

The aroma of grilled miso with a splash of ginger. Have one on ♪. There are three branches in Hokkaido and overseas locations in Las Vegas and the Philippines!

Susukino's first anchovy specialty ramen shop. The favorite dish is the seafood miso ramen. Or try the grilled anchovy Chinese noodles. How about the anchovy and pork W soup. We can change the ratios listed on the menu to deliver a bowl of ramen that is not too light and not too heavy. It's the best right after drinking!

G4 Bldg. 1F, 4-5, Minami Rokujo-Nishi  
☎ 011-533-7785  
open 24 hours

5-20, Minami Sanjo-Nishi ☎ 011-281-0085  
Tue-Thu 11:00-4:00 Fri-Sat 11:00-5:00  
Sun & Holiday 11:00-1:30

Light Bldg. 1F, 4-2-2, Minami Nanajo-Nishi  
☎ 011-513-1025 Mon-Thu 19:00-3:00  
Fri-Sat 19:00-4:00 Closed on Sundays and holidays

Special Offer Free Ajitama (boiled egg marinated in soy sauce) topping



**45 Sushi Zanmai** Susukino Shop  
CARD Wi-Fi EN CN TW KO RU

**46 Parfait Specialty Shop** Recipe for Happiness Sweets  
EN

**47 Dip & Merry**  
CARD Wi-Fi EN

Reasonable and delicious sushi made from the best ingredients and fish from Japan and abroad. Nigiri starting at just 98 yen (not including tax). recommended lunches and seasonal dishes, special campaigns, single dishes – the menu has more than 160 items!

Speaking of Sapporo's "shimo parfait (for finishing off)" is our shop! Reservations are required for our limited edition parfaits. "Midnight Princess", which is served in a shoe-shaped container. \*Toppings change depending on what's in season.

No only ruby chocolate or bitter chocolate ice cream that is the talk of the town, our product including mousse made of fresh strawberries, raspberries and pistachios are made with all our heart. Due to the limited amount, they are sold on a first-come, first-served basis, early purchase is recommended.

Kitahoshi Bldg. 1F, 1-3-9  
Minami Yonjo-Nishi ☎ 011-200-8631  
open 24 hours

Dai 32 Keiwa Bldg. 5F, 3-1, Minami Yonjo-Nishi  
☎ 011-512-6566  
20:00-25:00 Closed on Wednesday

Hotel Reiner Susukino 2F, 2-4-5  
Minami Sanjo-Nishi ☎ 011-211-7775  
17:30-0:00 Fri & Sat & before Holiday 17:30-1:00

**Evening views, recommended for couples!**  
**Susukino Maximum Fun Route**

**FOOD**  
8 HOKKAIDO BUFET DINING Kai

**ENTERTAINMENT**  
33 NORBESA

**BAR**  
28 FLAIR BAR es

**BAR**  
20 THE NIKKA BAR

**PARFAIT**  
46 Parfait Specialty Shop Recipe for Happiness - Sweet PLUS

**Since we're here, let's party! This one is for you!**  
**Susukino Night Fun Route**

**FOOD**  
3 WARAYAKI SAKABA AKUTO

**ENTERTAINMENT**  
35 PUBLIC THEATER PHOENIX

**BAR**  
27 BAR espana

**CLUB**  
39 Riviera

**STEAK**  
40 Picanha Minami Nanajo Shop

**Heck, I want to keep playing till dawn! This one is for you!**  
**Susukino Until Sunrise Route**

**FOOD**  
9 JAPANESE BUFET DINING DEN

**ENTERTAINMENT**  
36 555-

**CLUB**  
38 KING∞XMHU

**BAR**  
22 RAD BROTHERS

**RAMEN**  
42 Yamaokaya New Susukino Shop

